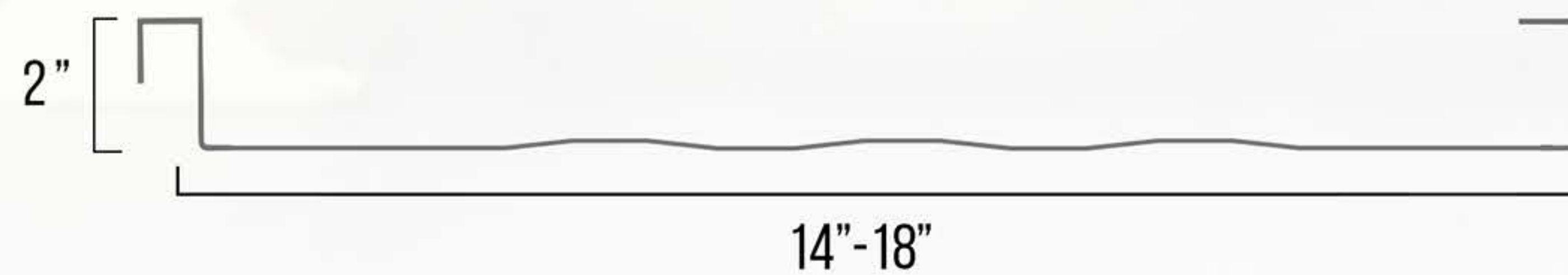


# 2" Mech Lock INSTALLATION MANUAL



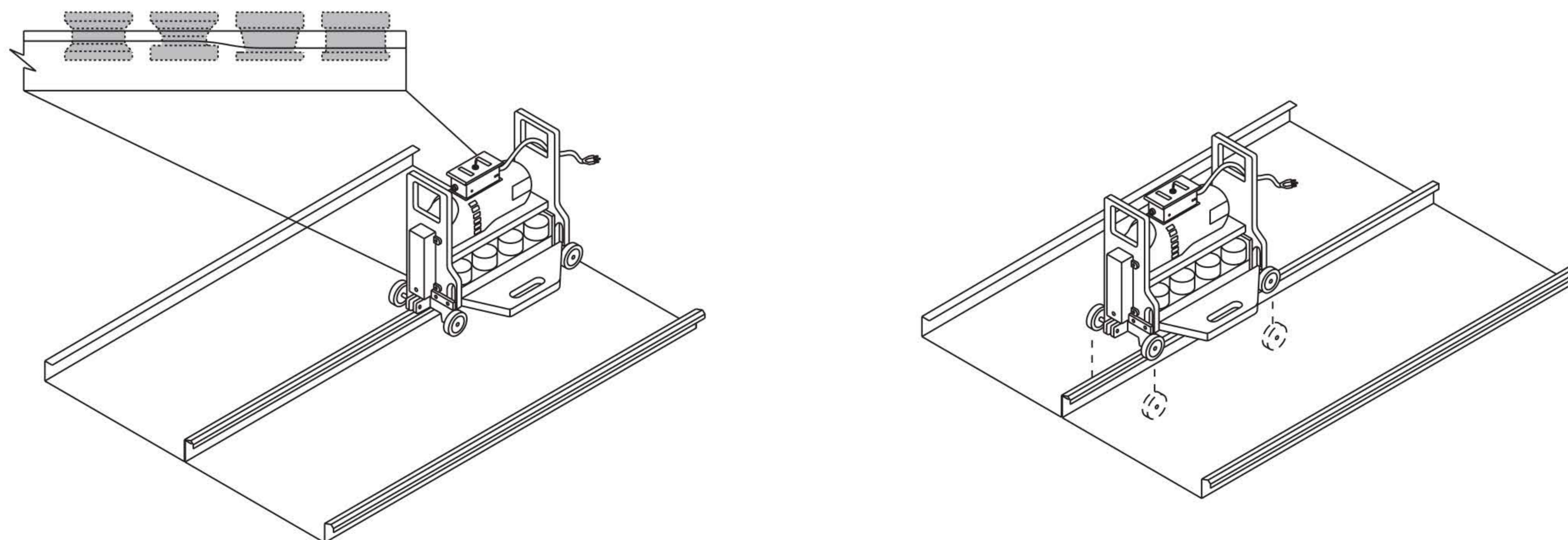
FOR STANDARD INSTALLATION PROTOCOL USE  
BY INDUSTRY PROFESSIONALS.



**PROTECH STEEL**  
COMMITTED TO EXCELLENCE



ONCE PANEL IS PLACED, SPACE CLIPS 24" O.C. AND FASTEN USING 1" CLIP SCREW OR DESRED SCREW PER APLICATION. AFTER THE SECOND PANEL IS PLACED OVER FIRST PANEL AND CLIP, IT IS OKAY TO HAND SEAM THESE PANLS TOGETHER. ONCE THE ROOF IS HAND SEAMED AT EAVE AND RIDGE, IT WILL THEN NEED TO BE MECHANICALLY SEAMED USING PROVIDED SEAMER.



PLYWOOD SUBSTRATE

#10 x 1" PANCAKE HEAD  
SCREWS @ 6" O.C.

PANEL

APPROVED  
UNDERLAYMENT

APPROVED SEALANT  
BETWEEN SEAMS

EAVE TRIM

FASCIA TRIM (IF REQ'D)

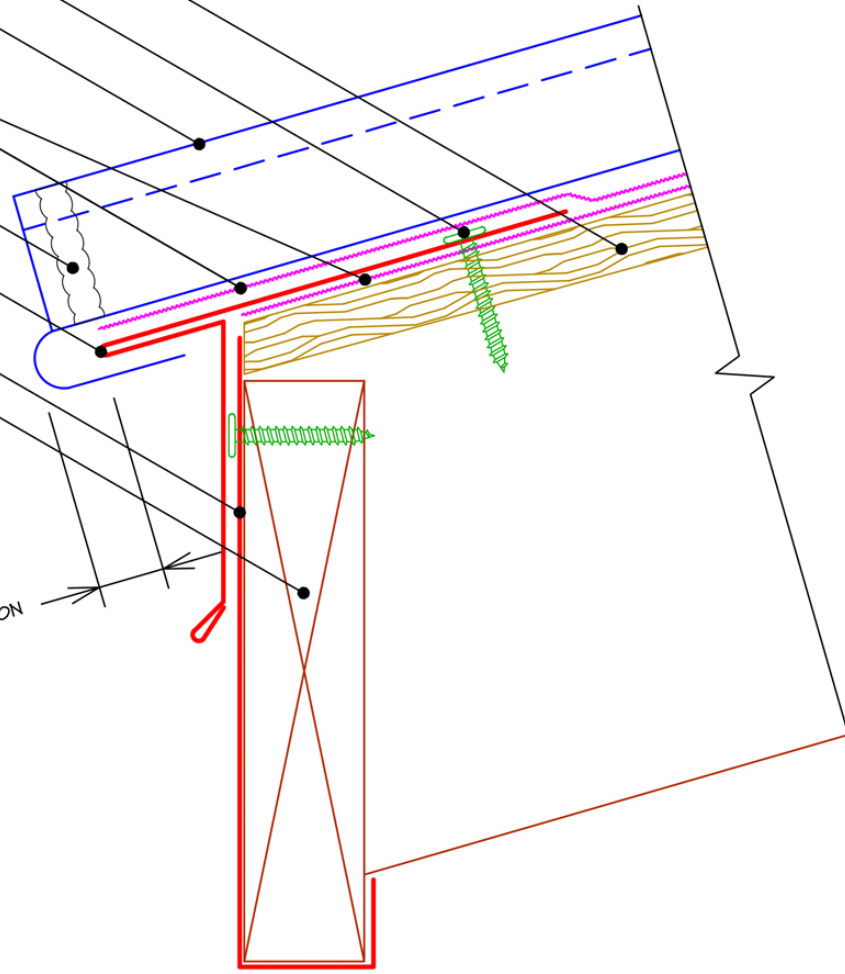
TRIM BOARDS,  
BY OTHERS

ALLOW FOR  
THERMAL EXPANSION

NOTE:  
MIN. 4" LAP ON ALL FLASHING.  
APPROVED SEALANT IN ALL  
FLASHING LAPS.

## E1 - Eave Detail

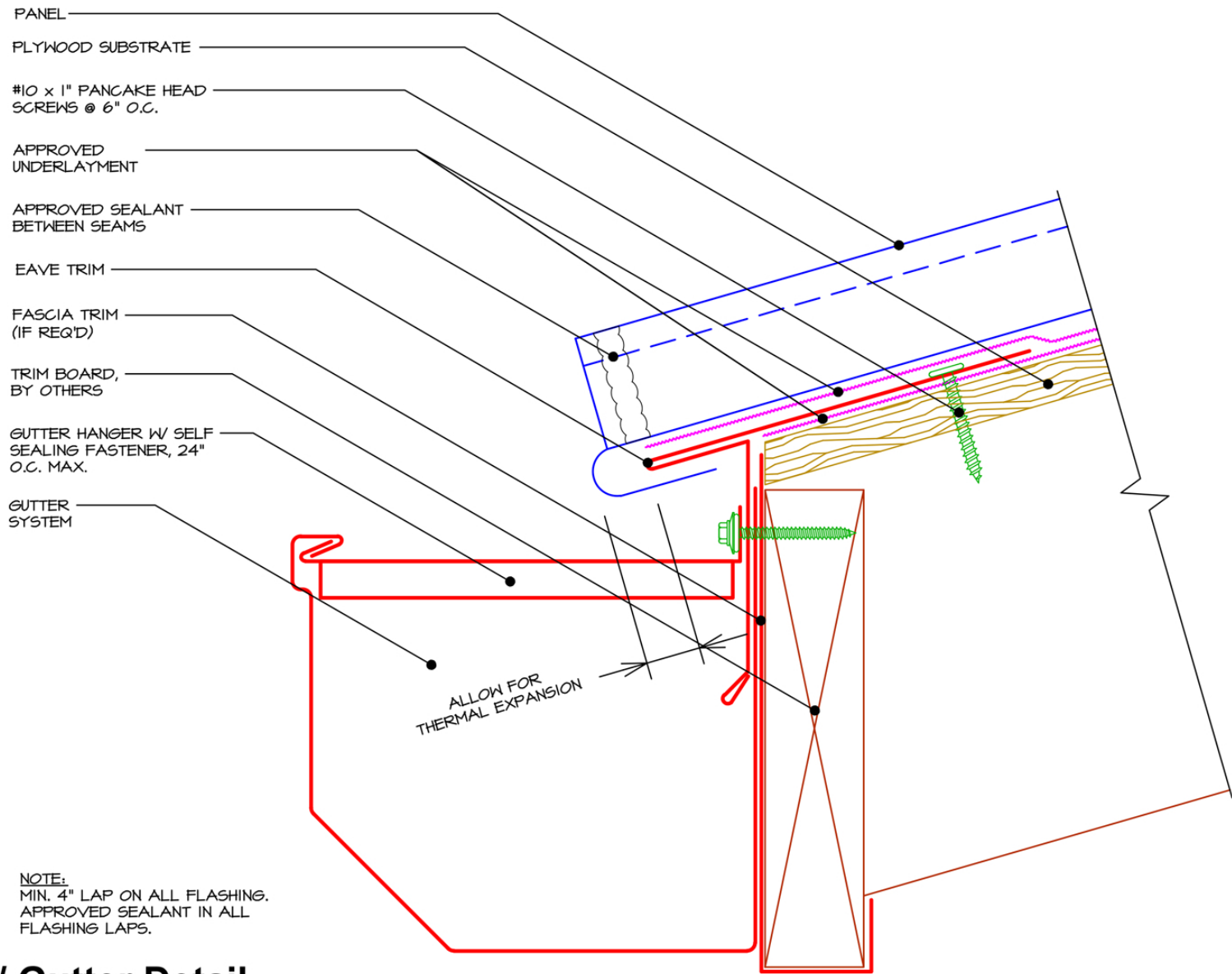
NOT TO SCALE





**PROTECH STEEL**  
COMMITTED TO EXCELLENCE

## 2" MECHANICAL LOCK



**NOTE:**  
MIN. 4" LAP ON ALL FLASHING.  
APPROVED SEALANT IN ALL  
FLASHING LAPS.

### EG1 - Eave W/ Gutter Detail

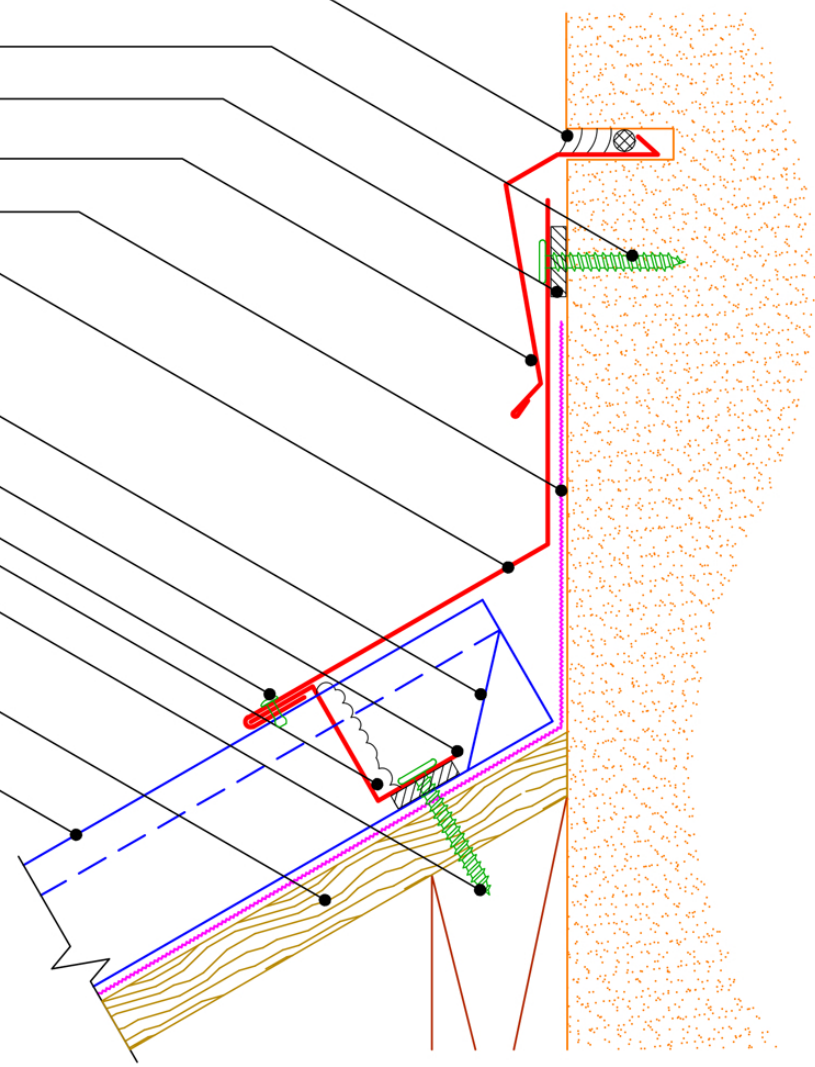
NOT TO SCALE



**2" MECHANICAL LOCK**

- BACKER ROD & APPROVED SEALANT
- ANCHOR SCREWS @ 16" O.C.
- 3/8" x 7/8" BUTYL TAPE
- COUNTER FLASHING W/ REGLET
- APPROVED UNDERLAYMENT
- HEADWALL TRANSITION
- BOX END OF PANEL
- Z CLOSURE SET IN 3/16" x 7/8" BUTYL TAPE SEALANT
- SS POP RIVET @ 18" O.C.
- CAULK SEAMS VERTICALLY W/ APPROVED SEALANT
- #10 X 1" PANCAKE HEAD SCREWS, (5) PER PANEL
- PLYWOOD SUBSTRATE
- PANEL

**NOTE:**  
MINIMUM LAP ON ALL FLASHING IS 4". APPROVED SEALANT IN LAPS OF ALL FLASHING. TURN APPROVED UNDERLAYMENT 3" VERTICALLY MIN.



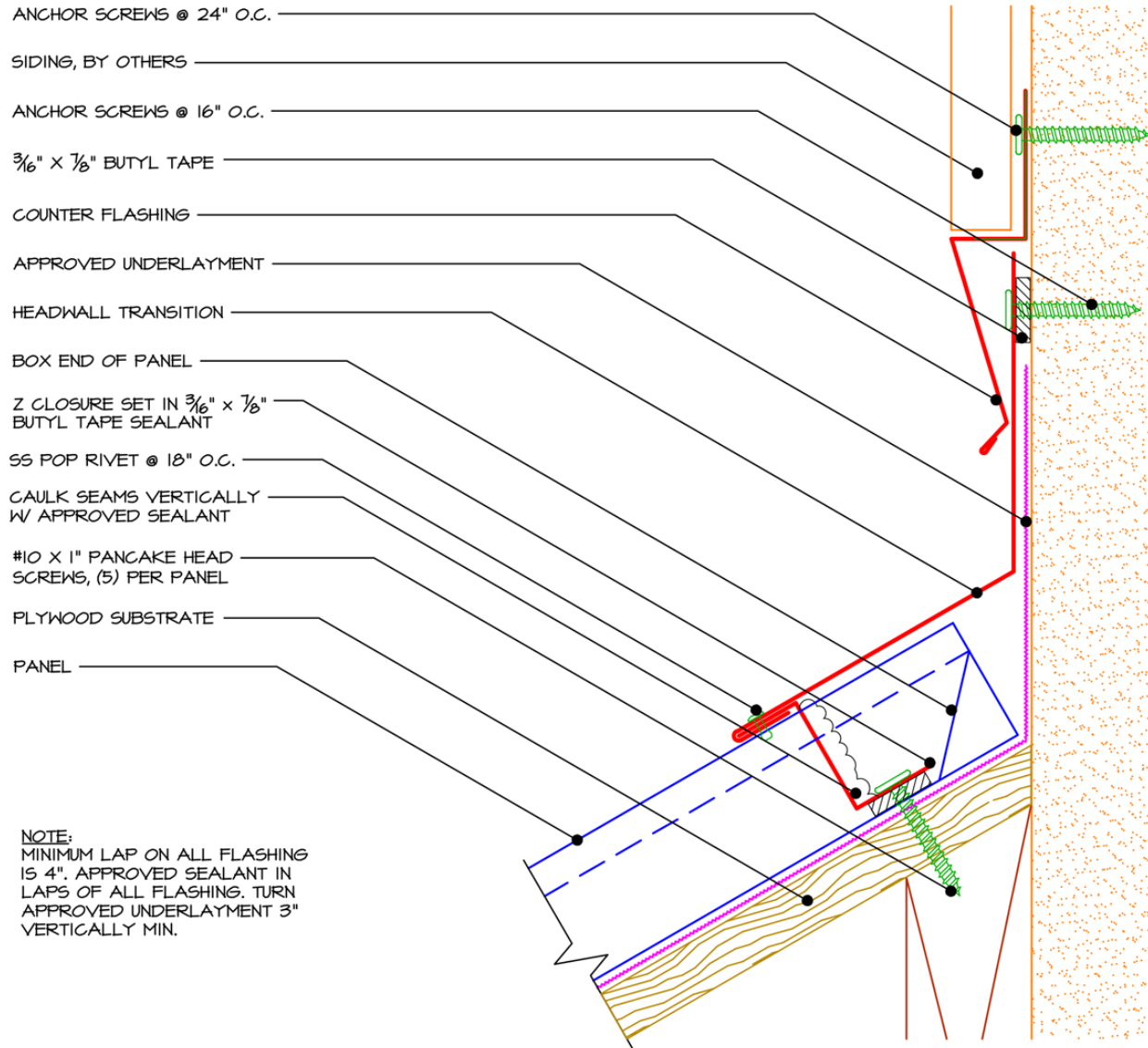
**HW1 - Headwall Detail**

NOT TO SCALE



**PROTECH STEEL**  
COMMITTED TO EXCELLENCE

## 2" MECHANICAL LOCK



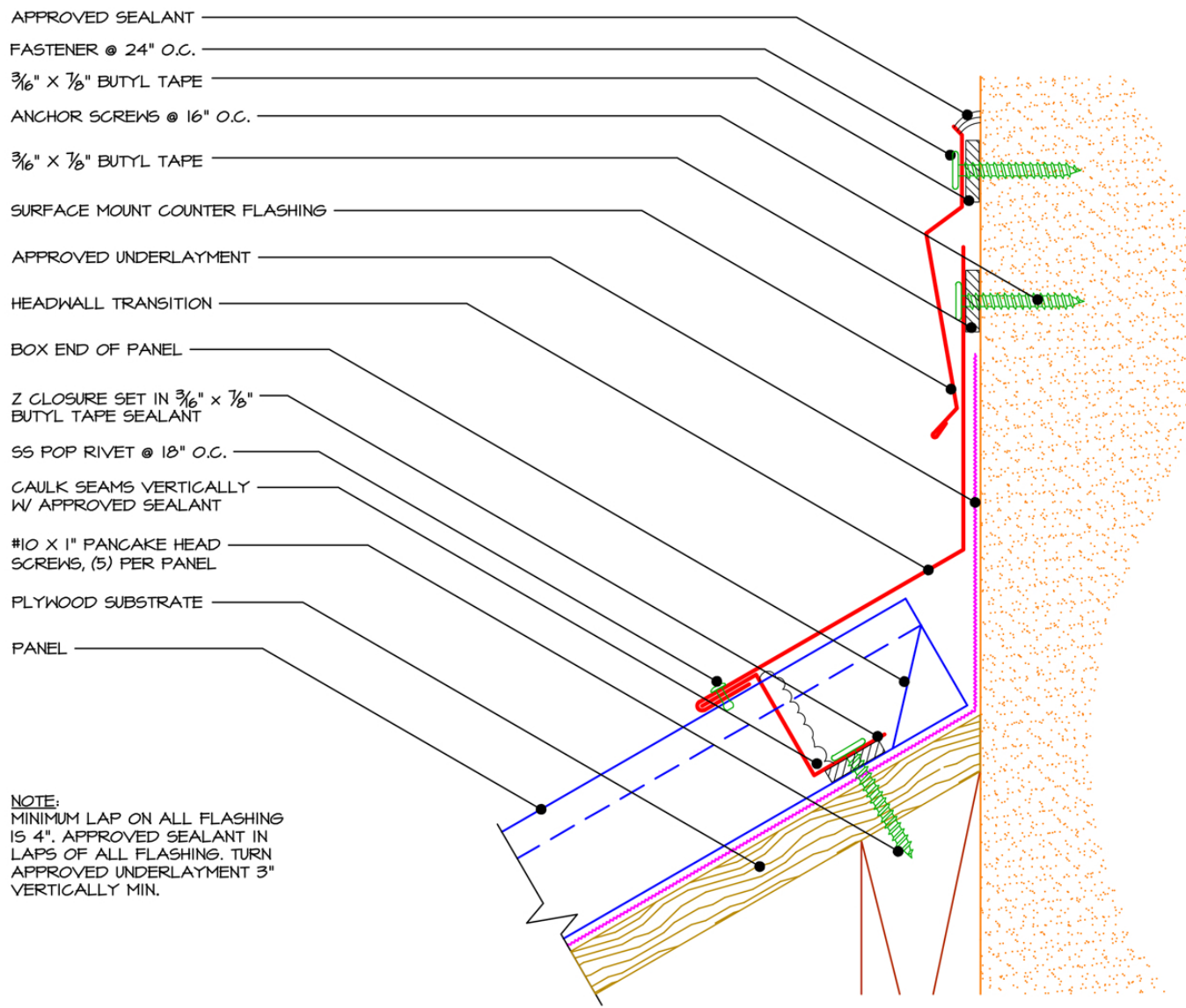
## HW2 - Headwall Detail

NOT TO SCALE



**PROTECH STEEL**  
COMMITTED TO EXCELLENCE

## 2" MECHANICAL LOCK

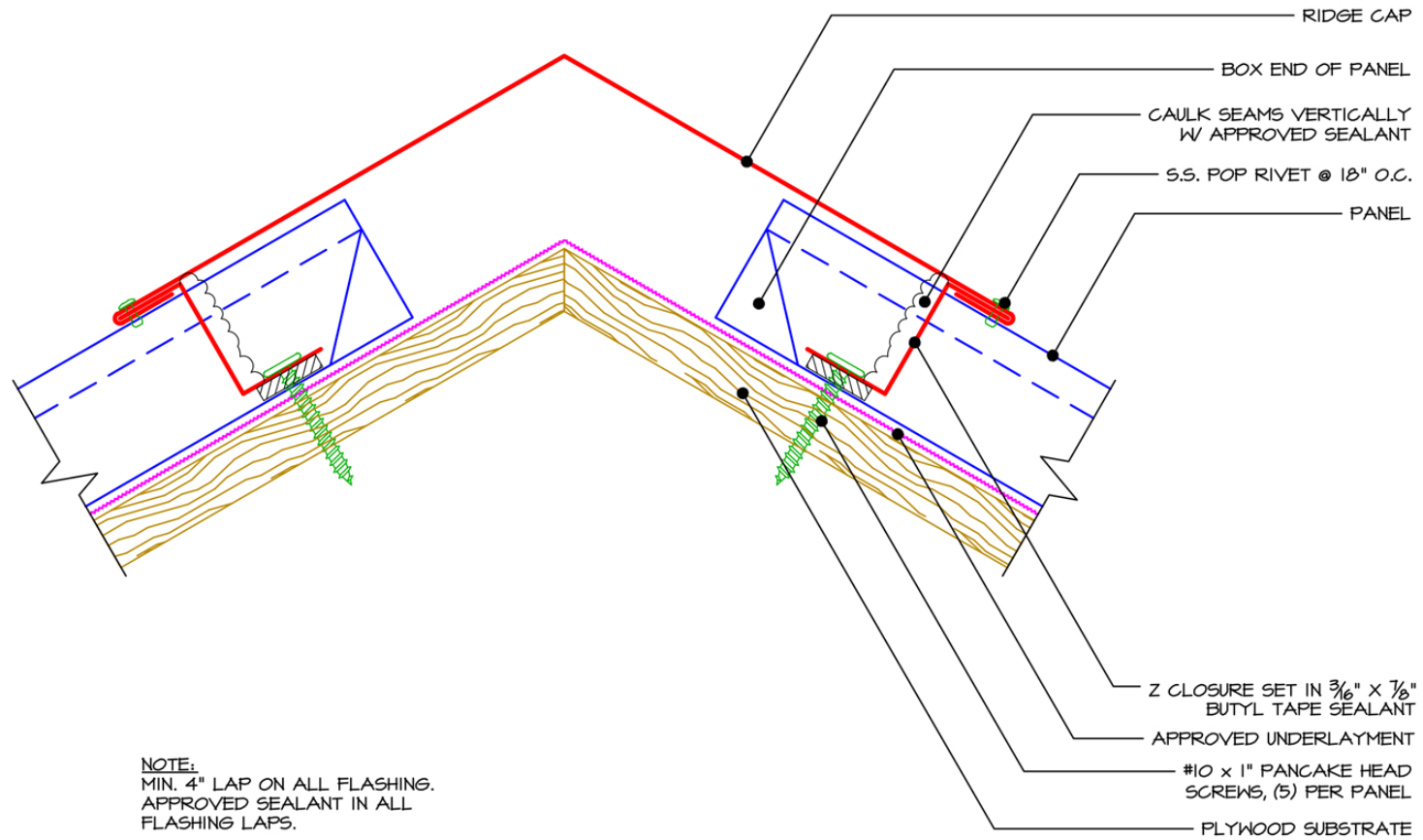


**NOTE:**  
MINIMUM LAP ON ALL FLASHING IS 4". APPROVED SEALANT IN LAPS OF ALL FLASHING. TURN APPROVED UNDERLAYMENT 3" VERTICALLY MIN.

### HW3 - Headwall Detail

NOT TO SCALE

## 2" MECHANICAL LOCK

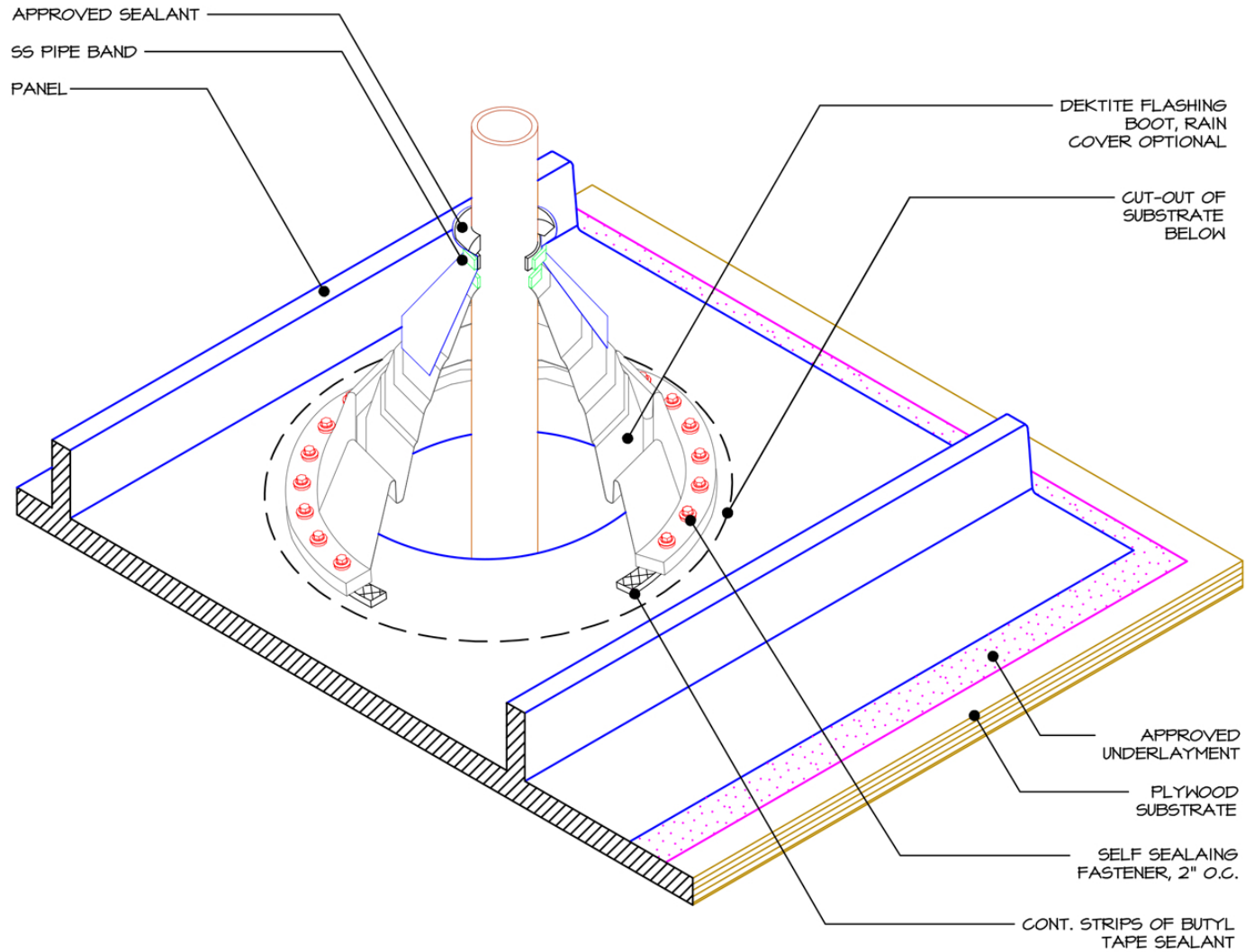


**NOTE:**  
MIN. 4" LAP ON ALL FLASHING.  
APPROVED SEALANT IN ALL  
FLASHING LAPS.

### HR1 - Standard Hip / Ridge Detail



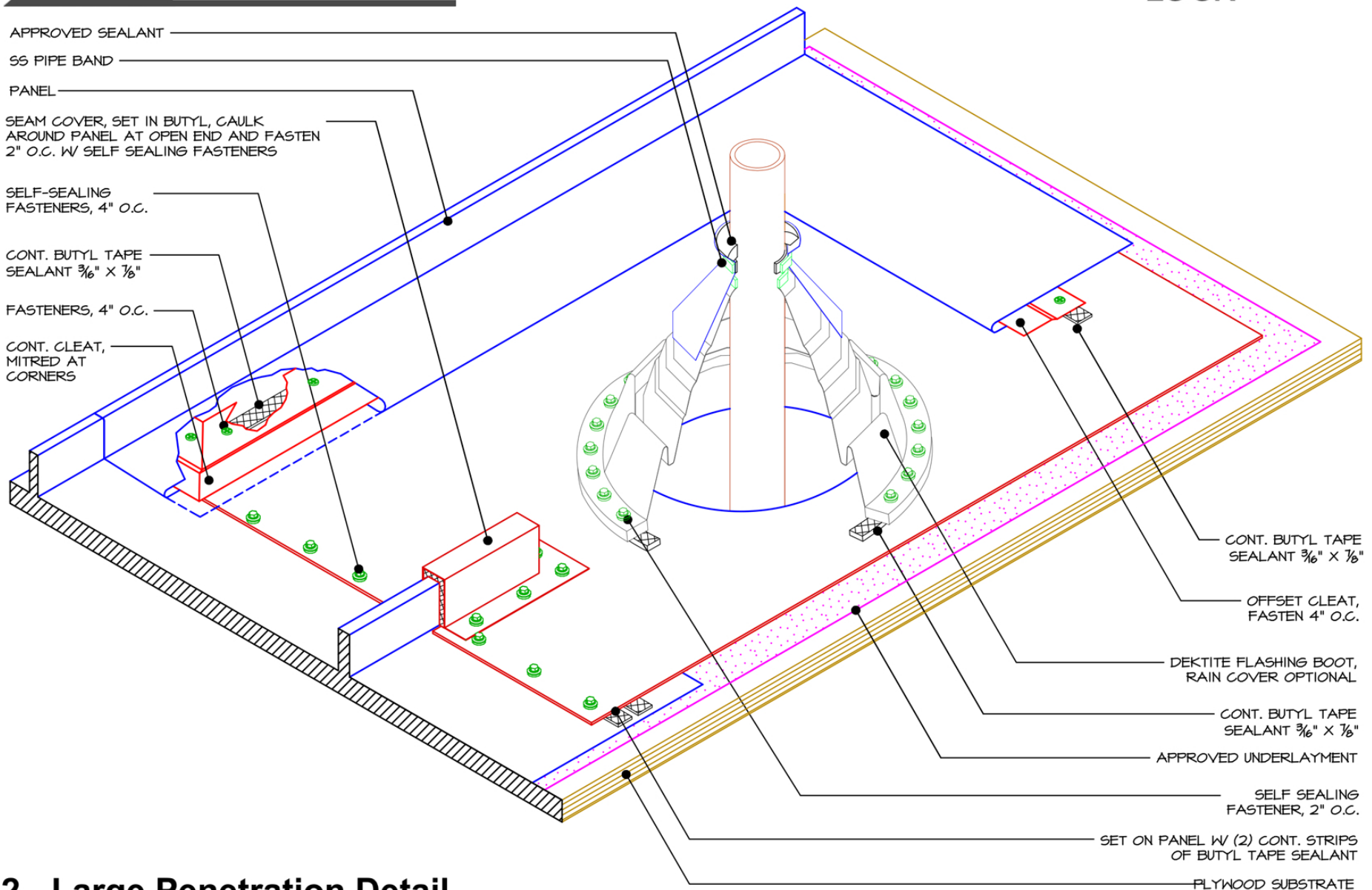
## 2" MECHANICAL LOCK



### P1 - Penetration Detail



**2" MECHANICAL LOCK**



APPROVED SEALANT

SS PIPE BAND

PANEL

SEAM COVER, SET IN BUTYL, CAULK  
AROUND PANEL AT OPEN END AND FASTEN  
2" O.C. W/ SELF SEALING FASTENERS

SELF-SEALING  
FASTENERS, 4" O.C.

CONT. BUTYL TAPE  
SEALANT 3/16" x 7/8"

FASTENERS, 4" O.C.

CONT. CLEAT,  
MITRED AT  
CORNERS

CONT. BUTYL TAPE  
SEALANT 3/16" x 7/8"

OFFSET CLEAT,  
FASTEN 4" O.C.

DEKTITE FLASHING BOOT,  
RAIN COVER OPTIONAL

CONT. BUTYL TAPE  
SEALANT 3/16" x 7/8"

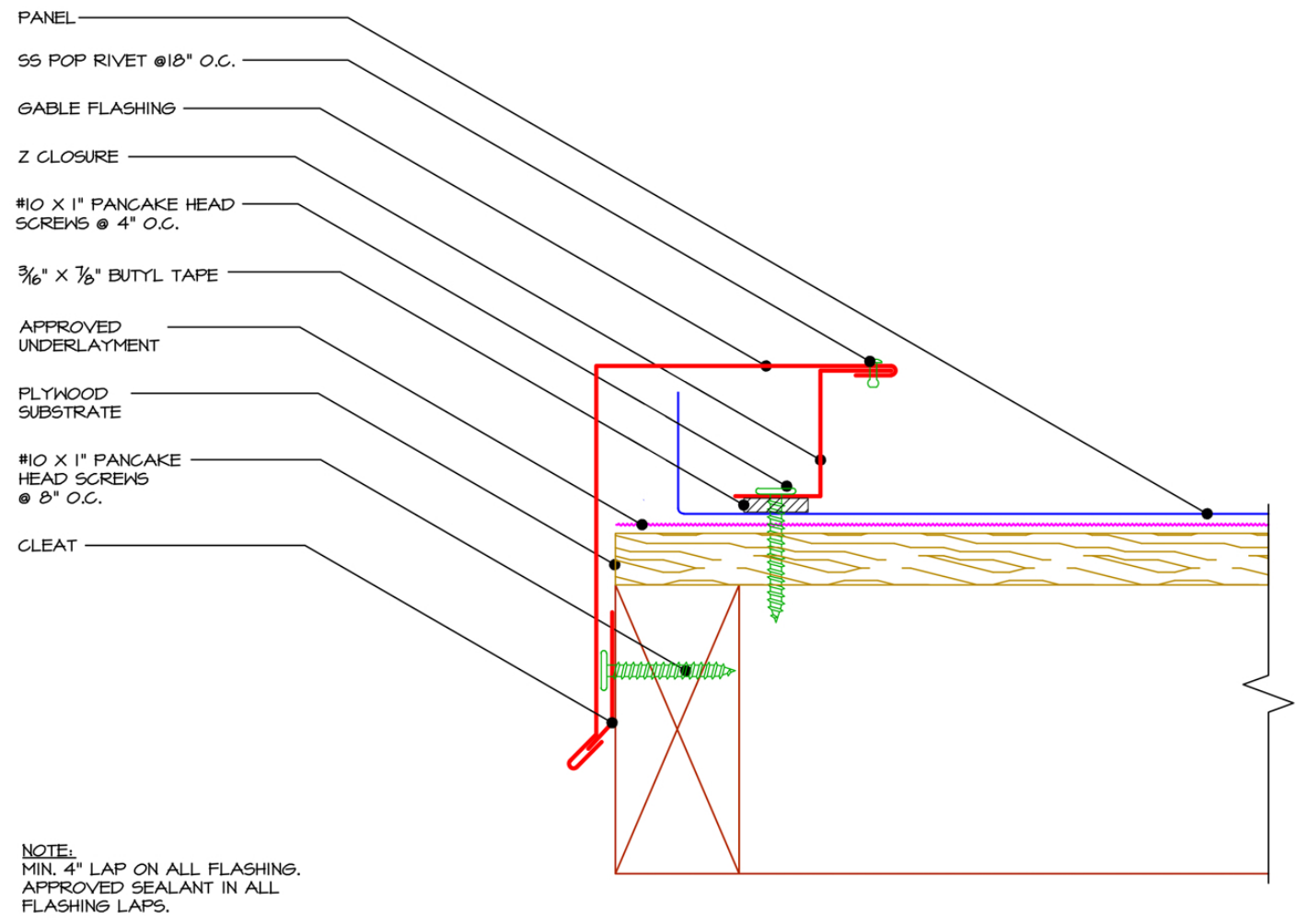
APPROVED UNDERLAYMENT

SELF SEALING  
FASTENER, 2" O.C.

SET ON PANEL W/ (2) CONT. STRIPS  
OF BUTYL TAPE SEALANT

PLYWOOD SUBSTRATE

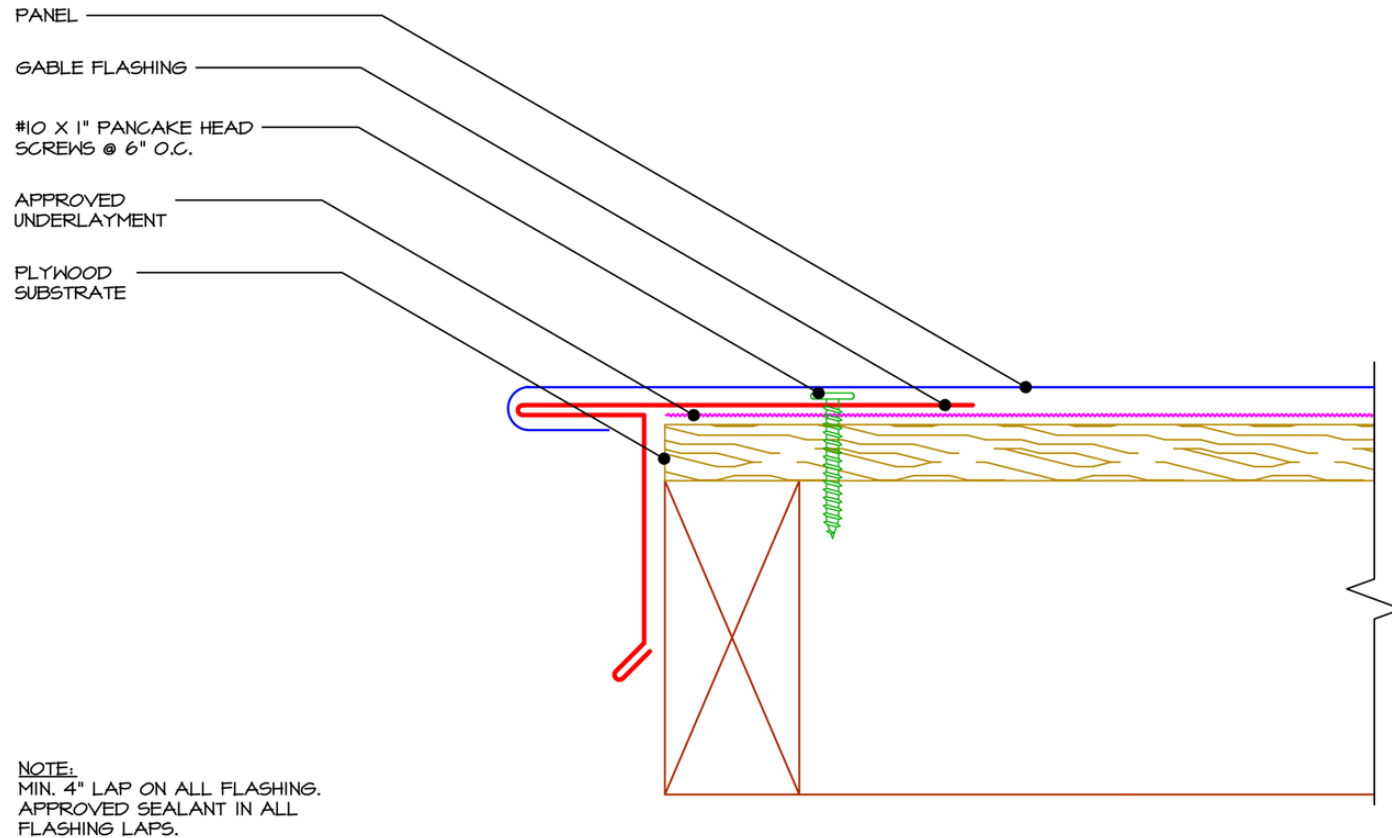
**P2 - Large Penetration Detail**



**RK1 - Rake / Gable Detail**

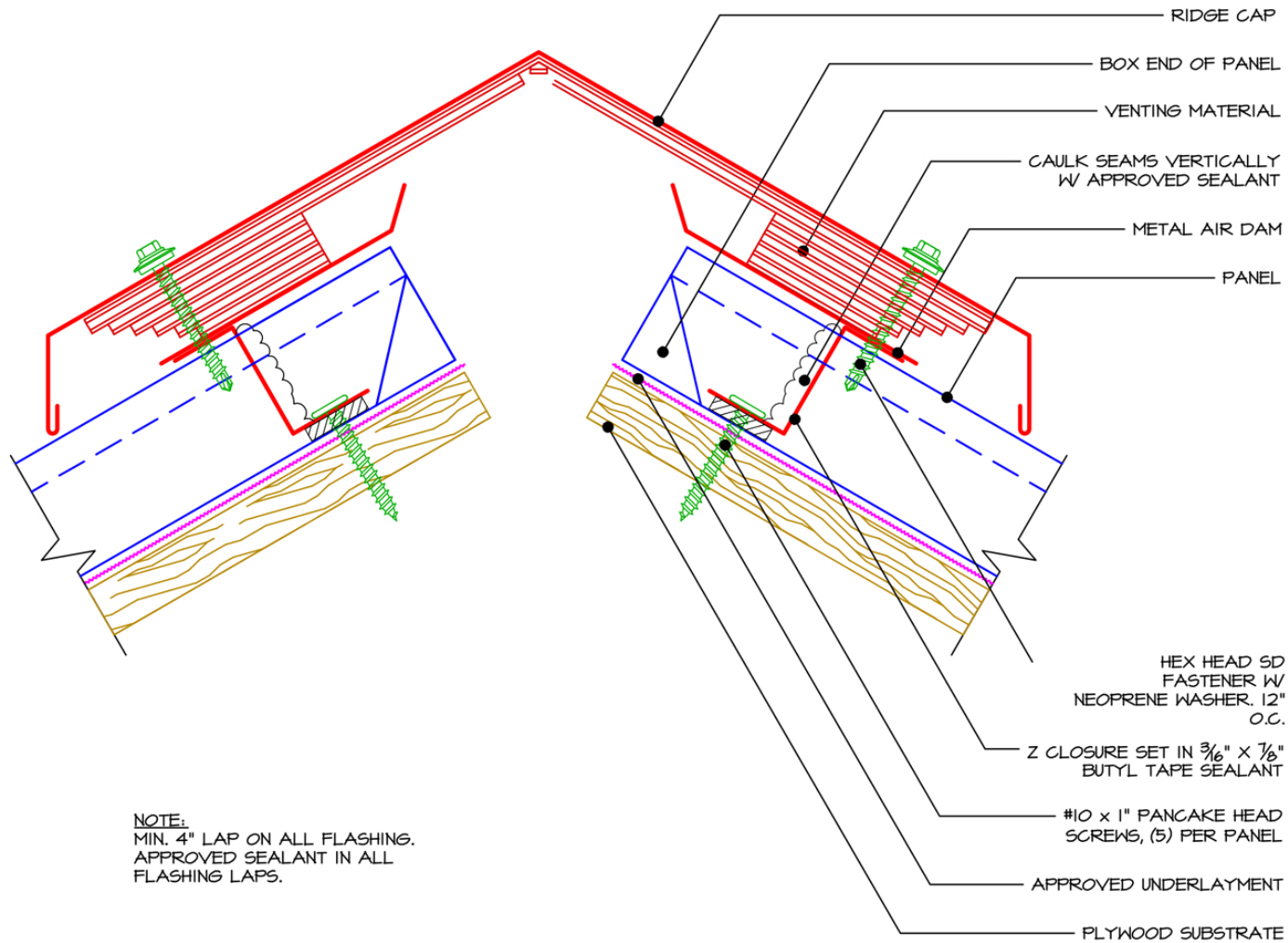
NOT TO SCALE

## 2" MECHANICAL LOCK



## RK2 - Rake / Gable Detail

## 2" MECHANICAL LOCK



**NOTE:**  
MIN. 4" LAP ON ALL FLASHING.  
APPROVED SEALANT IN ALL  
FLASHING LAPS.

## VR1 - Vented Ridge Detail

NOT TO SCALE



**PROTECH STEEL**  
COMMITTED TO EXCELLENCE

## 2" MECHANICAL LOCK

BACKER ROD & APPROVED SEALANT

ANCHOR SCREWS @ 16" O.C.

$\frac{3}{16}$ " x  $\frac{7}{8}$ " BUTYL TAPE

COUNTER FLASHING W/ REGLET

SIDEWALL TRIM

FIELD BEND PANEL

SS POP RIVET, 18" O.C.

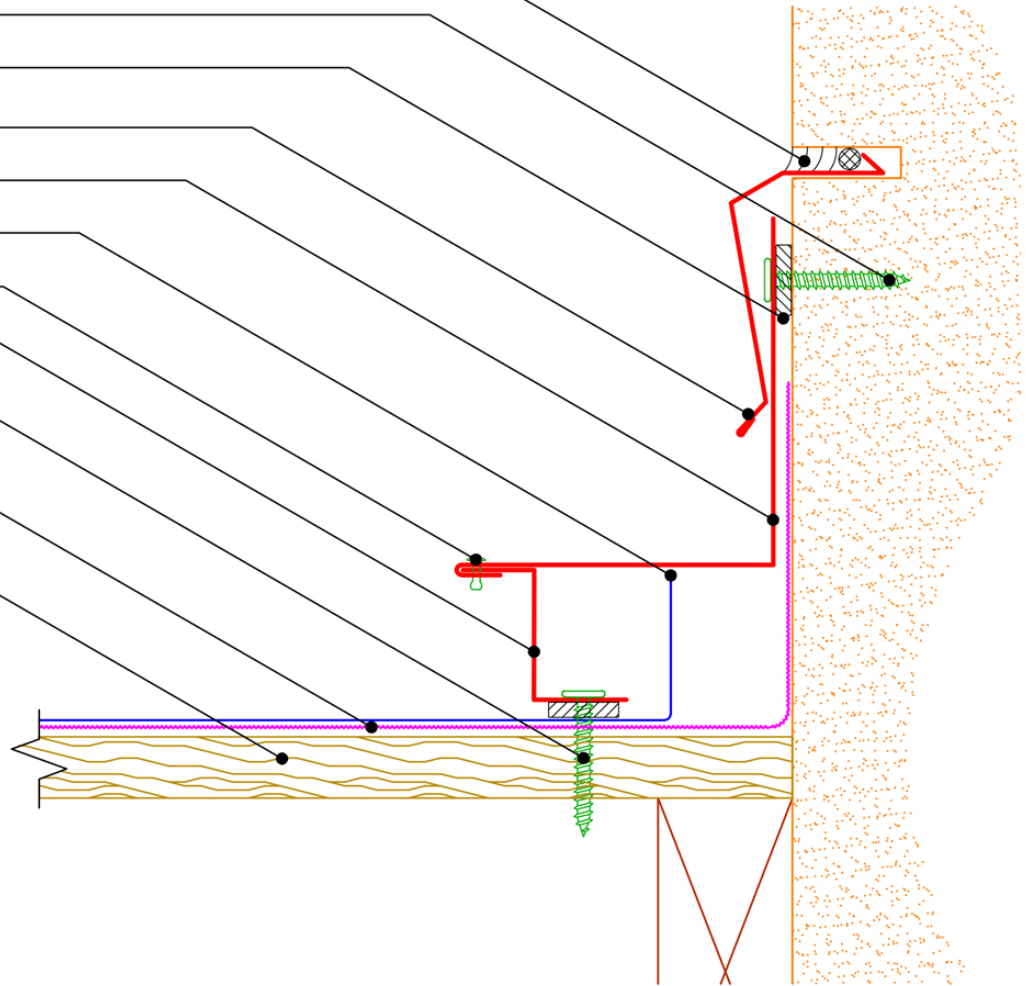
Z CLOSURE SET IN  $\frac{3}{16}$ " x  $\frac{7}{8}$ " BUTYL TAPE SEALANT

#10 x 1" PANCAKE HEAD SCREWS @ 4" O.C.

APPROVED UNDERLAYMENT

PLYWOOD SUBSTRATE

NOTE:  
MINIMUM LAP ON ALL FLASHING  
4". APPROVED SEALANT IN  
JOINTS OF ALL FLASHING. TURN  
APPROVED UNDERLAYMENT 3"  
MINIMUM.



## SW1 - Sidewall Detail

## 2" MECHANICAL LOCK

ANCHOR SCREWS @ 24" O.C.

SIDING

ANCHOR SCREWS @ 16" O.C.

$\frac{3}{16}$ " x  $\frac{1}{8}$ " BUTYL TAPE

COUNTER FLASHING

SIDEWALL TRIM

FIELD BEND PANEL

SS POP RIVET, 18" O.C.

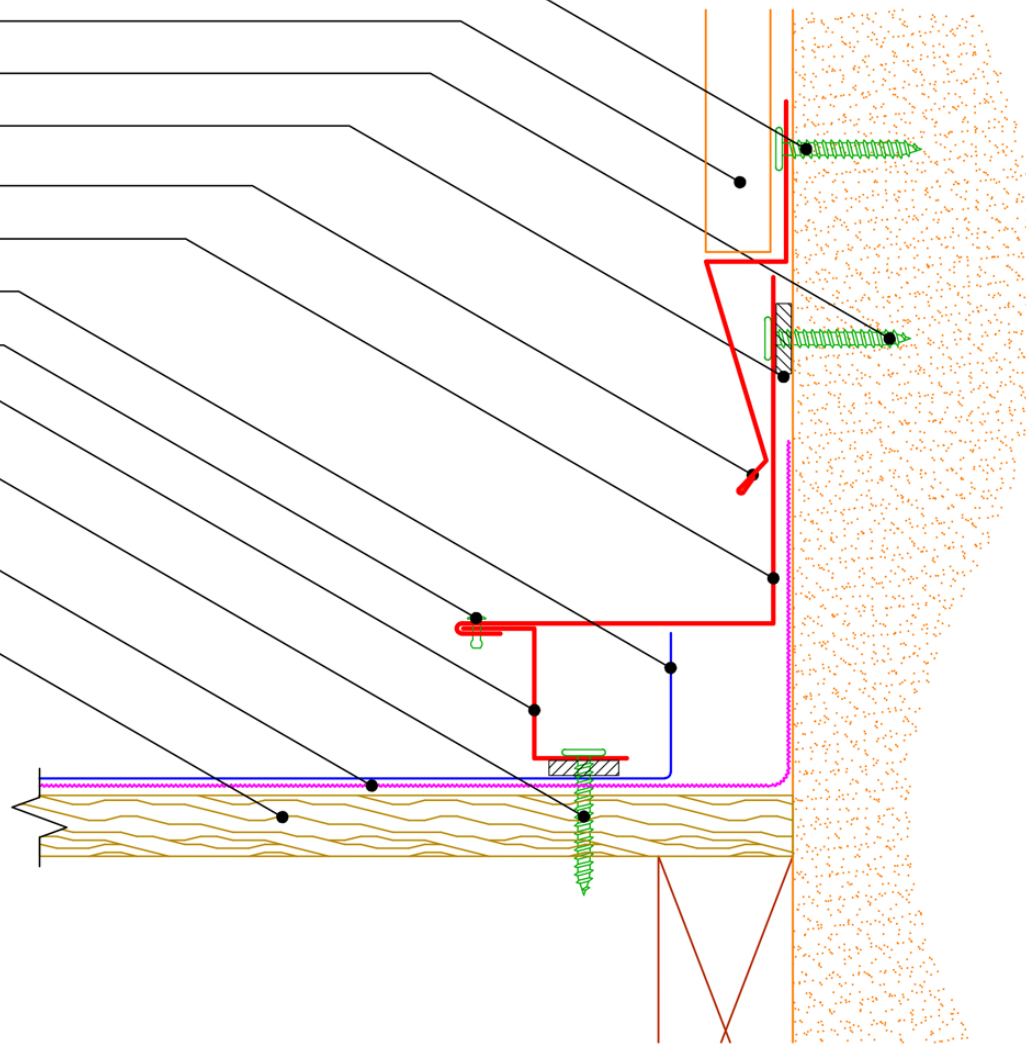
Z CLOSURE SET IN  $\frac{3}{16}$ " x  $\frac{1}{8}$ " BUTYL TAPE SEALANT

#10 x 1" PANCAKE HEAD SCREWS @ 4" O.C.

APPROVED UNDERLAYMENT

PLYWOOD SUBSTRATE

**NOTE:**  
MINIMUM LAP ON ALL FLASHING IS 4". APPROVED SEALANT IN LAPS OF ALL FLASHING. TURN APPROVED UNDERLAYMENT 3" VERTICALLY MIN.

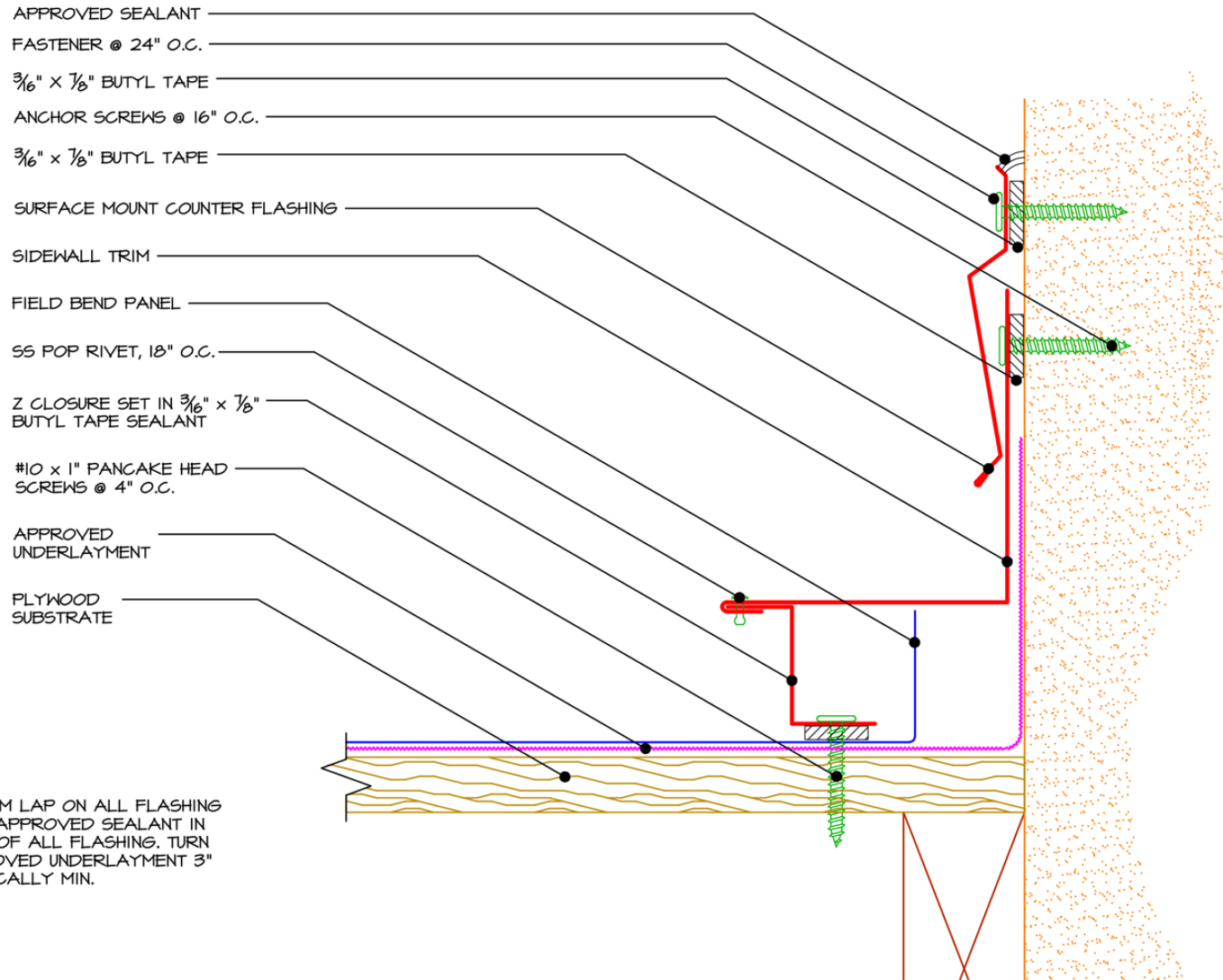


## SW2 - Sidewall Detail



**PROTECH STEEL**  
COMMITTED TO EXCELLENCE

## 2" MECHANICAL LOCK

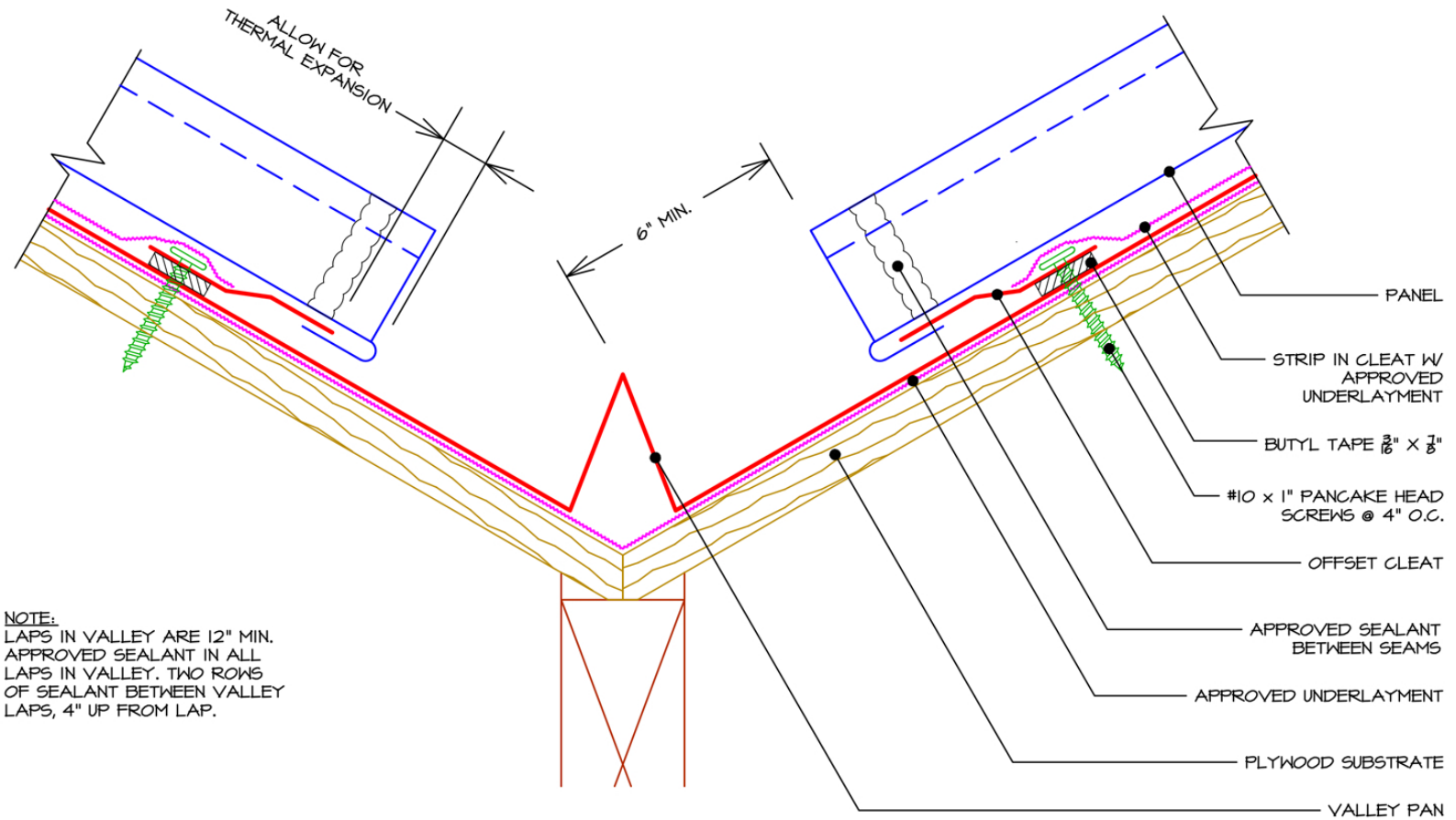


## SW3 - Sidewall Detail

NOT TO SCALE



## 2" MECHANICAL LOCK



**NOTE:**  
LAPS IN VALLEY ARE 12" MIN.  
APPROVED SEALANT IN ALL LAPS IN VALLEY. TWO ROWS OF SEALANT BETWEEN VALLEY LAPS, 4" UP FROM LAP.

## V1 - Valley Detail